

**Standard Steel Doors  
and Frames**  
*for*  
**Modular Masonry Construction**



Standards As Tough As Steel.™  
© 2023 Steel Door Institute

**STEEL DOOR INSTITUTE**  
30200 DETROIT ROAD • CLEVELAND, OHIO 44145

## **Standard Steel Doors and Frames for Modular Masonry Construction**

### **The Module**

#### **Definition:**

The size of any individual part, taken as a unit of measure for regular proportion. A basic unit of measure adopted by the building industry as 4 inches.

#### **Concept:**

The use of a standard modular dimension common to building products such as masonry improves finished buildings and structures in the following ways:

- Increased accuracy, legibility, and simplicity of contract documents.
- Added aesthetic flexibility induced by small unit standardization, allowing freedom of architectural design.
- Increased flexibility of finished structure through lower modification, addition, and renovation costs.
- Reduced overall material and labor costs by facilitating the use of standard practices and definable operating procedures.
- Interchangeability of materials is facilitated by the ability to substitute modular components.
- Estimating and takeoff simplified.
- Detailing and drawing coordination between trades and specialties simplified by small size standard grid.

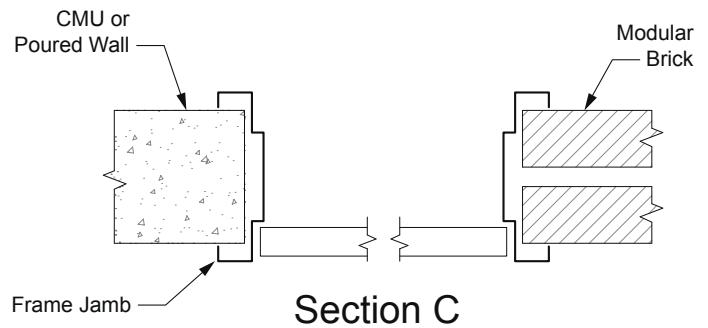
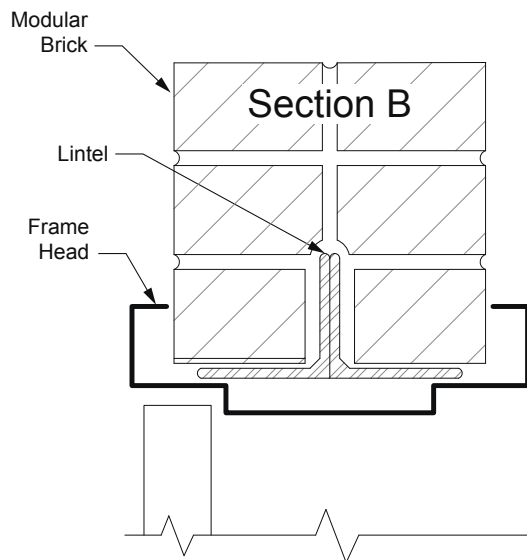
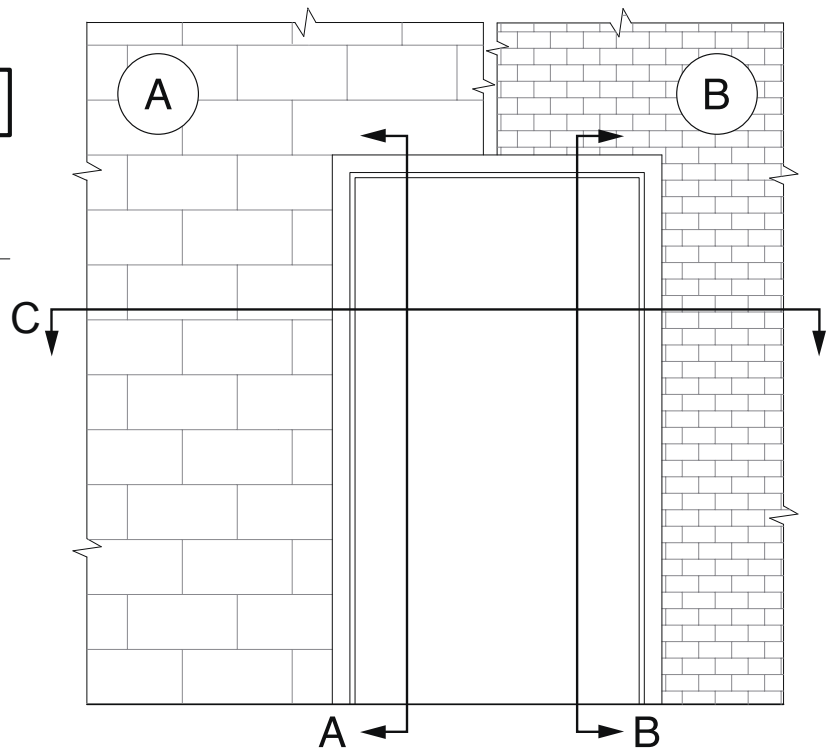
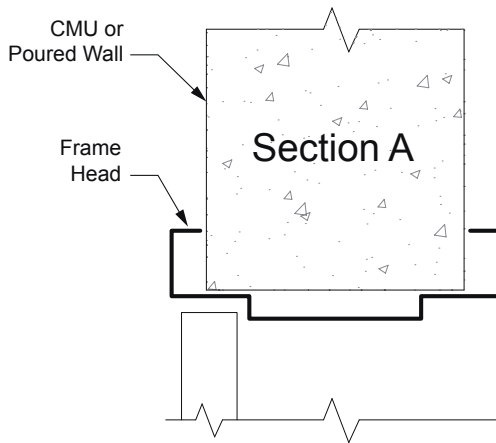
#### **Dimensions:**

Concrete masonry units (CMU) have been standardized to a nominal 8" high and 16" long module.

Modular bricks have been standardized to a nominal  $2\frac{2}{3}$ " high and 8" long module, therefore 6 bricks correspond to the modular size of CMU. This relationship is clearly shown on the following pages.

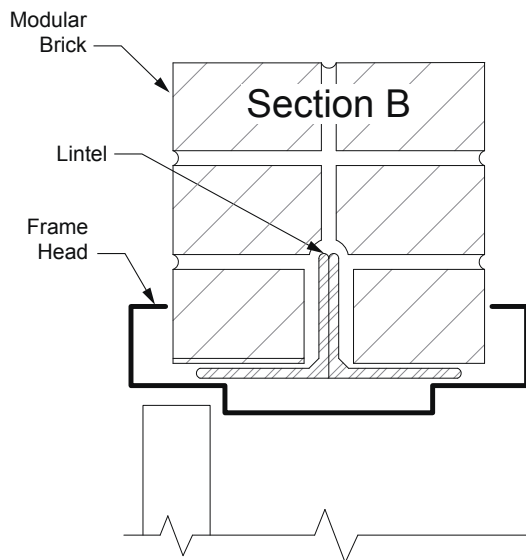
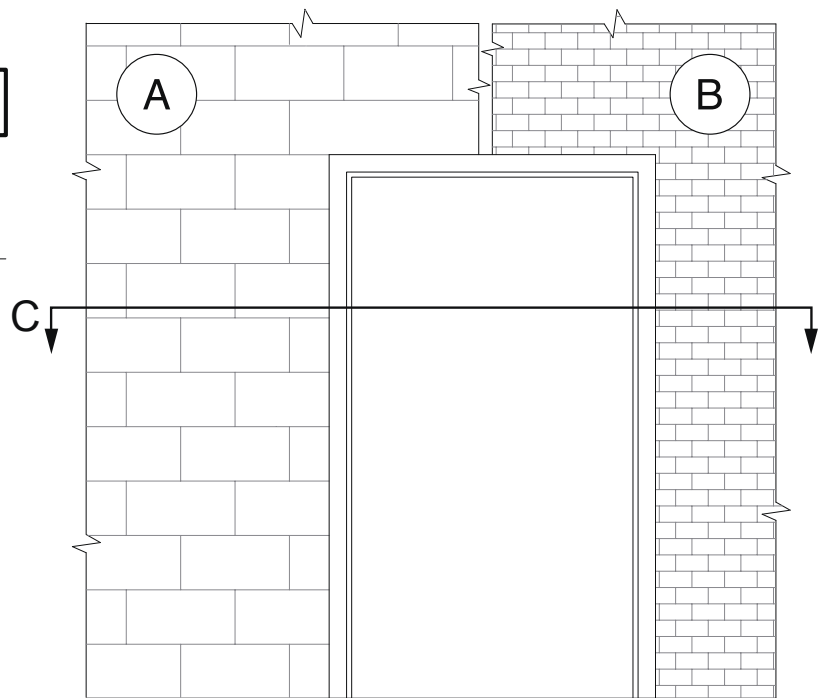
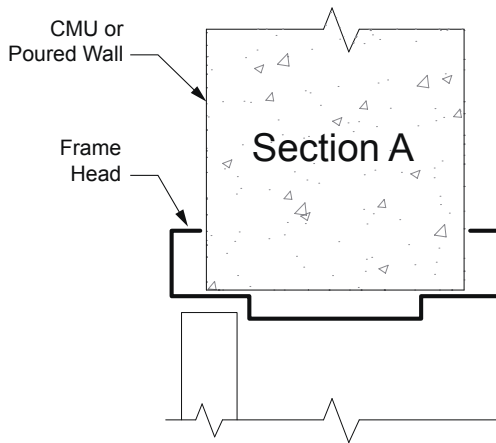
# Wrap Around Frame

## 6' 8" or 8' 0" Door

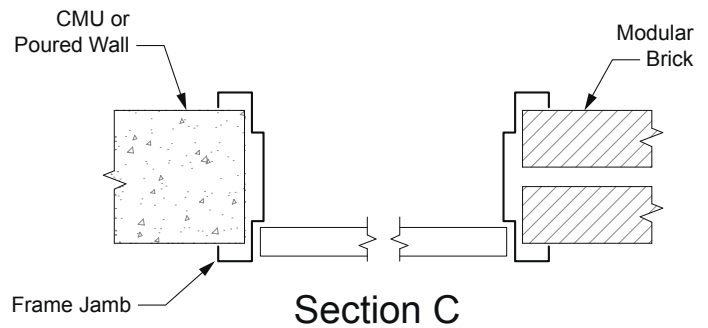


# Wrap Around Frame

## 7' 0" Door

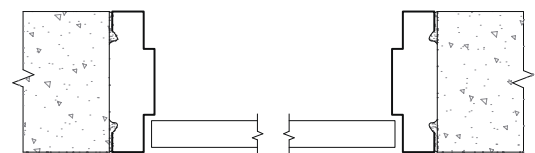
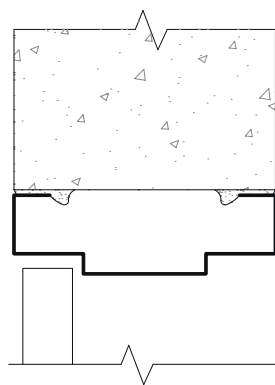
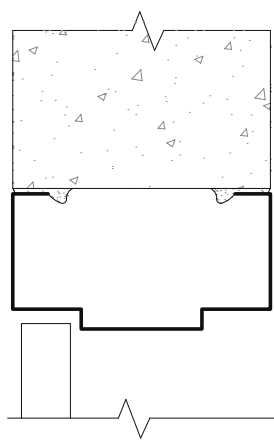
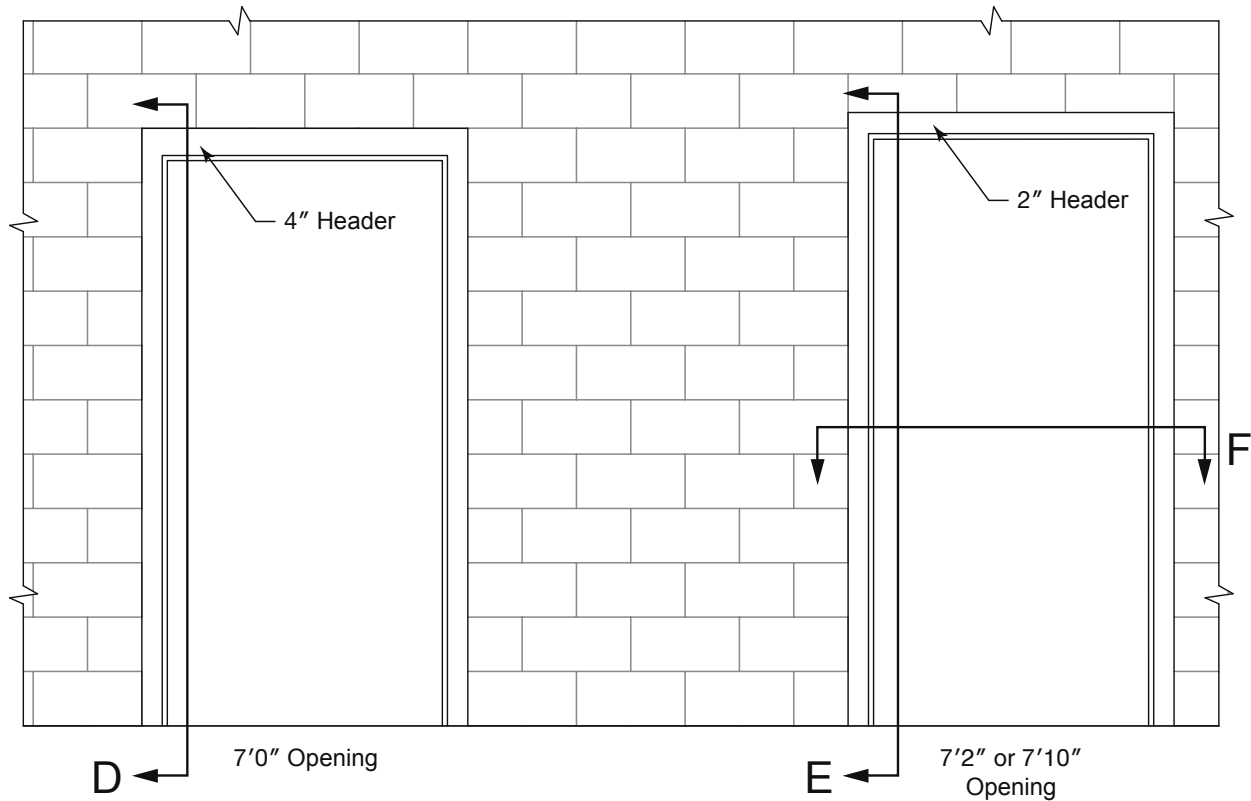


**Note:** A starter course of 4" modular masonry may be used to create alignment of the frame head with the masonry joints.



# Butt Type Frame

7' 0" Door with 4" Header or  
7' 2" and 7' 10" Doors with 2" Header



---

## AVAILABLE PUBLICATIONS

---

### Specifications

- ANSI/SDI A250.6** Recommended Practice for Hardware Reinforcing on Standard Steel Doors and Frames
- ANSI/SDI A250.8** Specifications for Standard Steel Doors and Frames (SDI-100)
- ANSI/SDI A250.14** Hardware Preparation in Steel Doors and Steel Frames
- SDI-108** Recommended Selection & Usage Guide for Standard Steel Doors
- SDI-118** Basic Fire Door, Fire Door Frame, Transom/Sidelight Frame, and Window Frame Requirements
- SDI-128** Guidelines for Acoustical Performance of Standard Steel Doors and Frames
- SDI-129** Hinge and Strike Spacing
- SDI-133** Guideline for Specifying Steel Doors & Frames for Blast Resistance
- SDI-136** Guideline for Specifying Windstorm Products

### Test Procedures

- ANSI/SDI A250.3** Test Procedure & Acceptance Criteria for Factory Applied Finish Coatings for Steel Doors and Frames
- ANSI/SDI A250.4** Test Procedure & Acceptance Criteria for Physical Endurance for Steel Doors, Frames and Frame Anchors
- ANSI/SDI A250.10** Test Procedure & Acceptance Criteria for Prime Painted Steel Surfaces for Steel Doors and Frames
- ANSI/SDI A250.13** Testing and Rating of Severe Windstorm Resistant Components for Swinging Door Assemblies for Protection of Building Envelopes (Not applicable for FEMA 320/361 or ICC-500 Shelters)
- SDI-113** Standard Practice for Determining the Steady-State Thermal Transmittance of Steel Door and Frame Assemblies
- SDI-131** Accelerated Physical Endurance Test Procedure for Steel Doors

### Construction Details

- ANSI/SDI A250.11** Recommended Erection Instructions for Steel Frames
- SDI-110** Standard Steel Doors & Frames for Modular Masonry Construction
- SDI-111** Recommended Details for Standard Steel Doors, Frames, Accessories and Related Components
- SDI-122** Installation Troubleshooting Guide for Standard Steel Doors & Frames

### Miscellaneous Documents

- SDI-112** Zinc-Coated (Galvanized/Galvannealed) Standard Steel Doors and Frames
- SDI-117** Manufacturing Tolerances for Standard Steel Doors and Frames
- SDI-124** Maintenance of Standard Steel Doors & Frames
- SDI-127** Industry Alert Series (A-L)
- SDI-130** Electronic Hinge Preparations
- SDI-134** Glossary of Terms for Hollow Metal Doors and Frames
- SDI-135** Guidelines to Measure for Replacement Doors in Existing Frame Openings

---

## MEMBERS OF THE STEEL DOOR INSTITUTE

---

### **CECO**

**AN ASSA ABLOY DOOR GROUP COMPANY**  
9159 Telecom Drive  
Milan, TN 38358-3425  
(731) 686-8345  
[www.cecodoor.com](http://www.cecodoor.com)

### **CURRIES**

**AN ASSA ABLOY DOOR GROUP COMPANY**  
1502 12th Street, P.O. Box 1648  
Mason City, IA 50402-1648  
(641) 423-1334  
[www.curries.com](http://www.curries.com)

### **DEANSTEEL MANUFACTURING CO.**

931 S. Flores Street  
San Antonio, TX 78204-1406  
(210) 226-8271  
[www.deansteel.com](http://www.deansteel.com)

### **DE LA FONTAINE INDUSTRIES, INC.**

3 Normac Road  
Woburn, MA 01801  
(781) 932-8663  
[www.delafontaine.com](http://www.delafontaine.com)

### **DCI**

7980 Redwood Avenue  
Fontana, CA 92336-1638  
(909) 770-5700  
[www.dcihollowmetal.com](http://www.dcihollowmetal.com)

### **HOLLOW METAL XPRESS (HMX)**

3440 Stanwood Boulevard  
Huntsville, AL 35811-9021  
(256) 851-6670  
[www.HMXpress.com](http://www.HMXpress.com)

### **MESKER DOOR**

3440 Stanwood Boulevard  
Huntsville, AL 35811-9021  
(256) 851-6670  
[www.meskerdoor.com](http://www.meskerdoor.com)

### **MPI**

319 North Hills Road  
Corbin, KY 40701  
(606) 523-0173  
[www.metalproductsinc.com](http://www.metalproductsinc.com)

### **PIONEER INDUSTRIES, INC.**

**AN ASSA ABLOY DOOR GROUP COMPANY**  
111 Kero Road  
Carlstadt, NJ 07072  
(201) 933-1900  
[www.pioneerindustries.com](http://www.pioneerindustries.com)

### **PREMIER STEEL DOORS & FRAMES**

**AN ASSA ABLOY DOOR GROUP COMPANY**  
2840 Sterlington Road  
Monroe, LA 71203  
(318) 361-0796  
[www.trustpremier.com](http://www.trustpremier.com)

### **REPUBLIC DOORS & FRAMES**

155 Republic Drive  
McKenzie, TN 38201-0580  
(731) 352-3383  
[www.republicdoor.com](http://www.republicdoor.com)

### **STEELCRAFT**

9017 Blue Ash Road  
Cincinnati, OH 45242  
(513) 745-6400  
[www.steelcraft.com](http://www.steelcraft.com)

### **STILES**

**AN ASSA ABLOY DOOR GROUP COMPANY**  
1885 Kinser Road  
Ceres, CA 95307  
(209) 538-3667  
[www.stilesdoors.com](http://www.stilesdoors.com)



Standards As Tough As Steel.™

---

## STEEL DOOR INSTITUTE

---

30200 DETROIT ROAD • CLEVELAND, OHIO 44145  
440.899.0010 • [www.steeldoor.org](http://www.steeldoor.org)