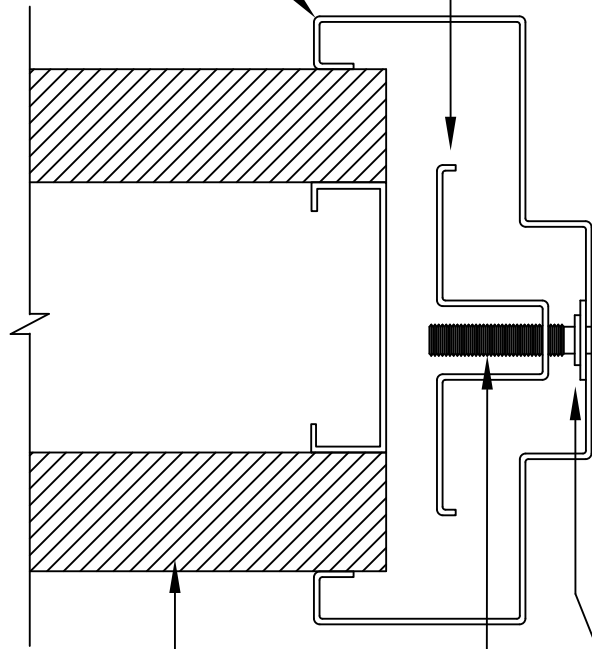


SLIP-ON DRYWALL
DOOR FRAME

COMPRESSION ANCHOR



SCREW HEAD RETAINER

1/4-20 MACHINE SCREW

WALL COMPRISED OF GYPSUM CORE WITH
5/8" GYPSUM BOARD ON EACH SIDE

Note:

Use a screwdriver to turn the 1/4-20 machine screw which moves the compression anchor in contact with the wall stud.



TITLE 'Slip-on Drywall' assembly with
compression anchor

REV 1
DATE 6/1/15

DRAWING NO. 011
SCALE NOT TO SCALE