

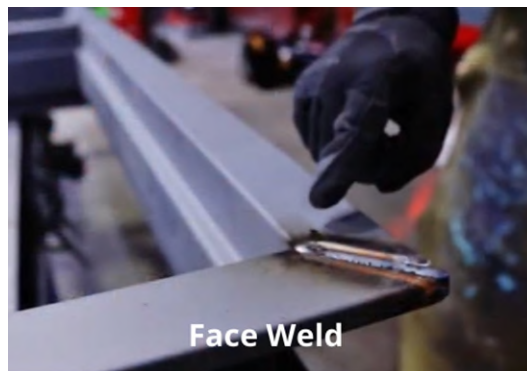


---

## Full Profile Weld vs Face Welded Frames



Full Profile Weld



Face Weld

Some specifications only state “welded frames” and not whether they want face welds or full profile welds. In instances like this where **full profile welds** are not requested, specifiers can expect to receive **face welded** frames.

Face welded frames are the default because fully welded frames would unnecessarily increase cost and lead time. Fully welded frames may be preferred in some specialty applications, and you should consult with the manufacturer.

[Continue Reading](#)

---

# New AIA Education Courses Available



Learn the essentials about steel doors and frames, including types of frames, fire ratings, nomenclature, cores, and performance levels. You will also learn about custom and specialty doors for windstorms, blasts, bullets, and acoustics.

[VIEW THIS COURSE >>](#)



Ready for a deeper dive into high performance doors? Learn the benefits and how to specify for forced entry, acoustic, bullet resistant, blast resistant, custom, wood grain, tornado, hurricane, stainless steel, lead-lined and temperature-rise doors.

[VIEW THIS COURSE >>](#)

[View All SDI Courses](#)



Copyright (C) 2022 - Steel Door Institute - All rights reserved.